



# #3 - 6300 LONDON ROAD RICHMOND 1222 SQ. FT.

8'-0" - 8'-10" CEILING HEIGHTS

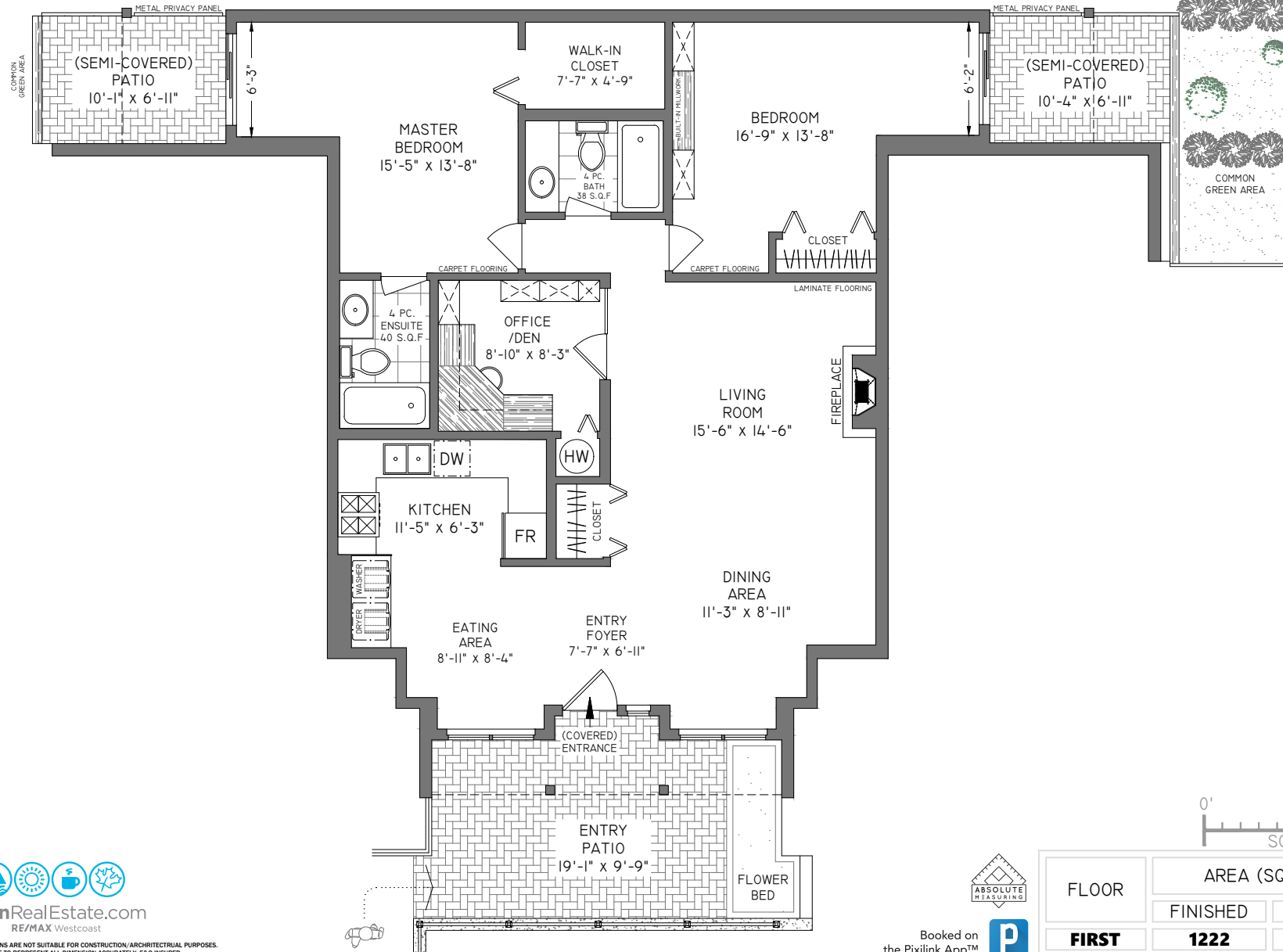
## Lynn Sakai-Boden

PERSONAL REAL ESTATE CORPORATION

lynn@lynnsdreamhomes.com

www.lynnsdreamhomes.com

604.218.4800



Booked on the Pixilink App™

FLOOR	AREA (SQ. FT.)	
	FINISHED	PATIO
<b>FIRST</b>	<b>1222</b>	<b>359</b>



THE REPRESENTED FLOOR PLANS ARE NOT SUITABLE FOR CONSTRUCTION ARCHITECTURAL PURPOSES. EVERY EFFORT HAS BEEN MADE TO REPRESENT ALL DIMENSION ACCURATELY. E&O INSURED. FINAL SQUARE FOOTAGE MAY BE OBTAINED FROM STRATA PLAN.